

CompeGPSLand 7.2.rc4

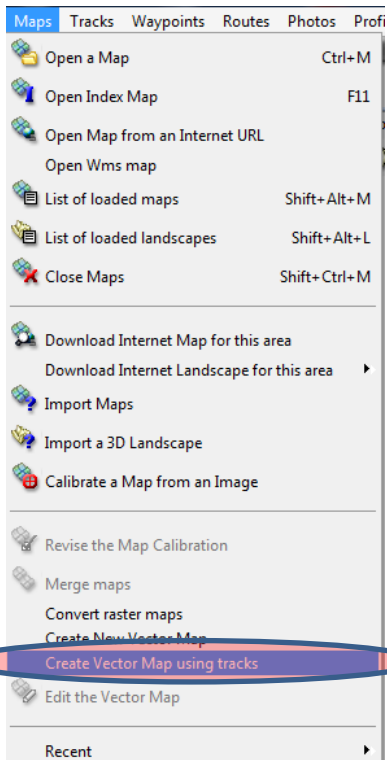
How to create „Routable trackmap”

Tutorial

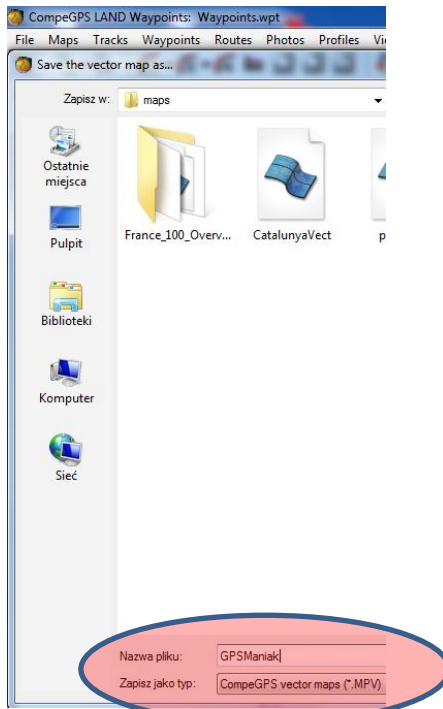
- On basis of Bieszczady guide by Mr. Lech Ratajczak (GPSManiak)
- <http://gps.bieszczady.pl/trasy.htm>

Follow the steps 1-6 (*the order is much important!)

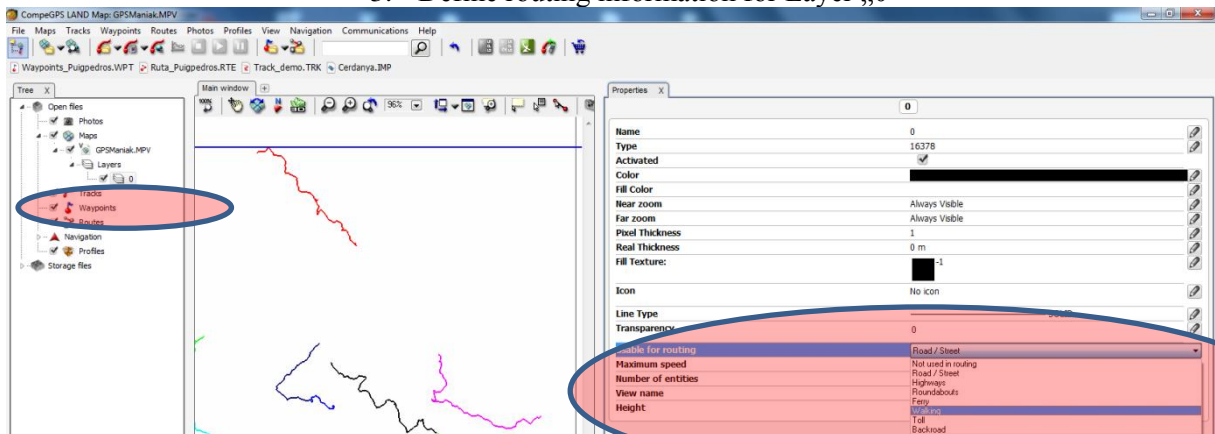
1. Save all tracks *.TRK in one folder



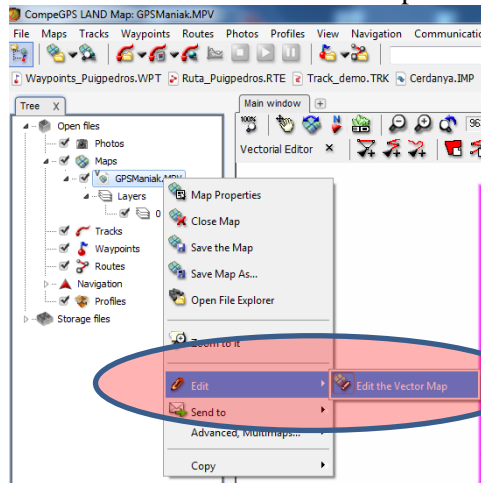
2. Save tracks under *.MPV



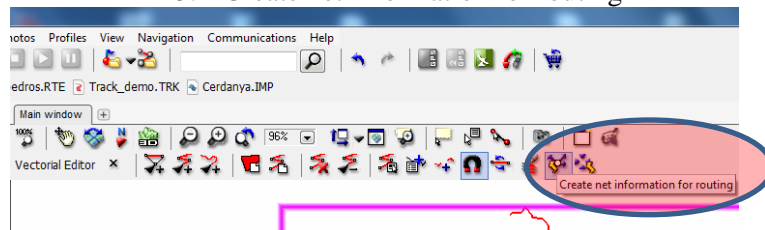
3. Define routing information for Layer „0”



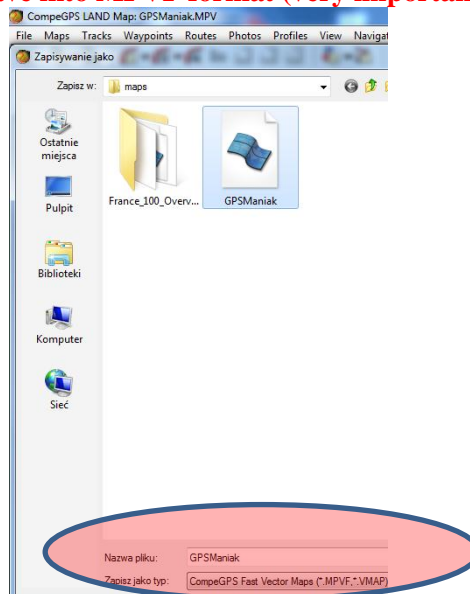
4. Edit the Vector Map



5. Create net information for routing



6. Save into MPVF format (very important!!!)



7. ENJOY! ;)

CONS:

1. MPVF is much memory-consuming format (zooming-out in Sportiva causes FAE!)
2. No-way to create Abc-searchable POIs MPVF.