

Nüvi 2460 LMT

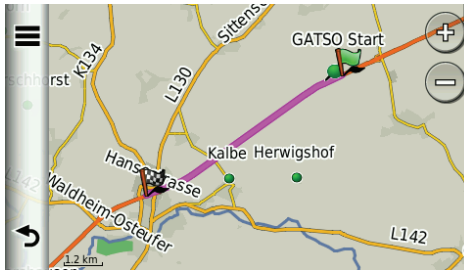
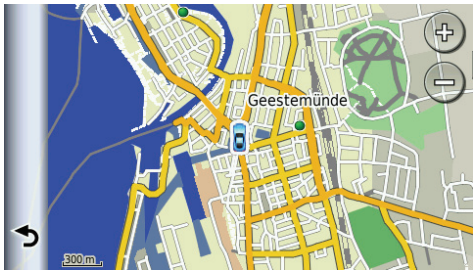
Übersicht über „Kartendesign“

Kartenübersicht
Höhe: 300m

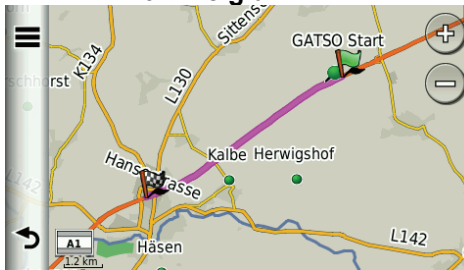
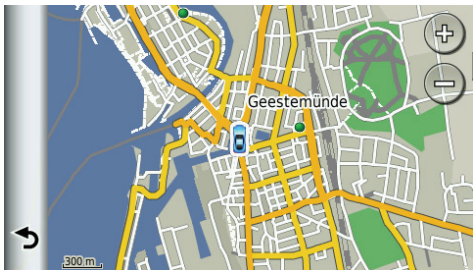
Mit einer vorhandene Route
Höhe: 1,2km

Mit einer vorhandene Route
Innenstadt

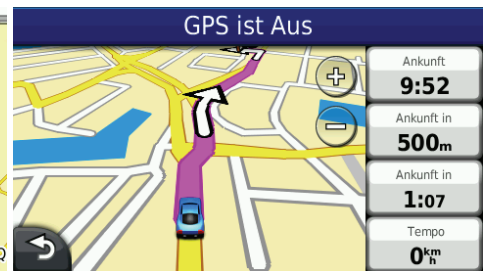
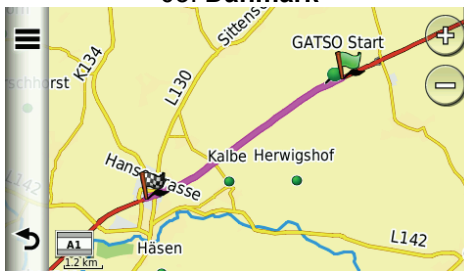
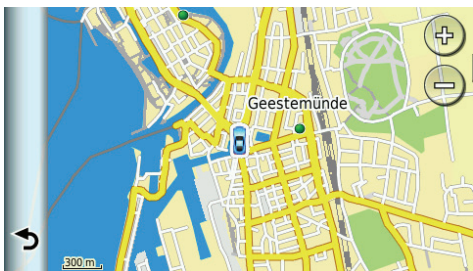
01: Garmin



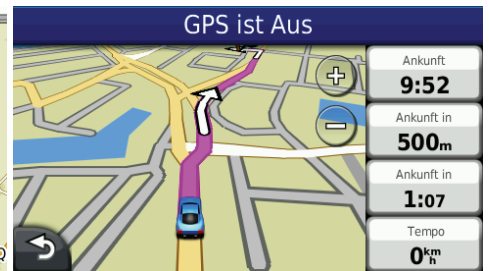
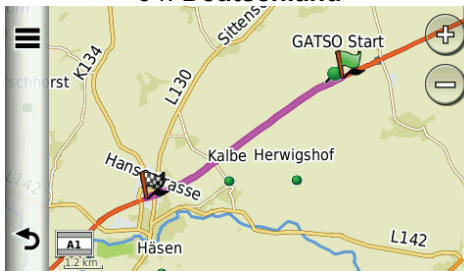
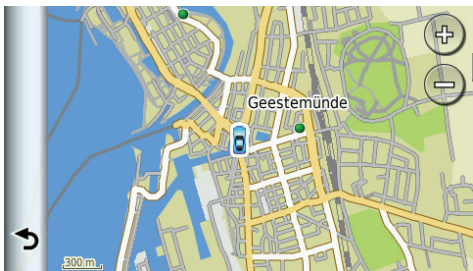
02: Belgium



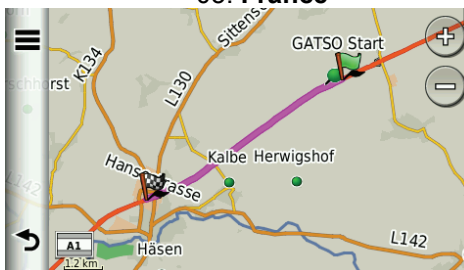
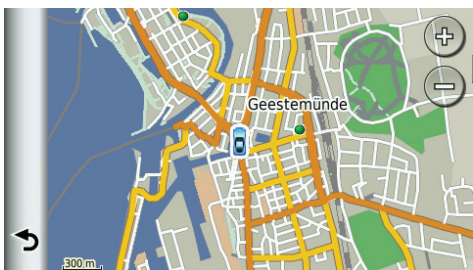
03: Danmark



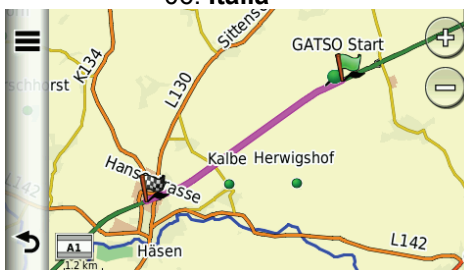
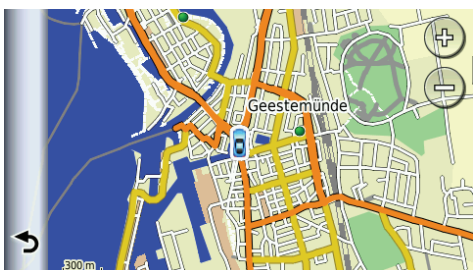
04: Deutschland



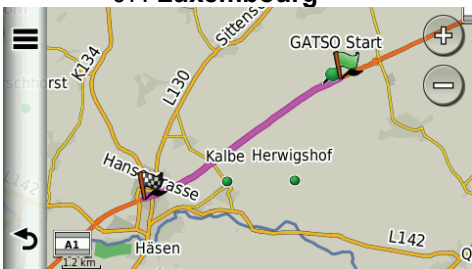
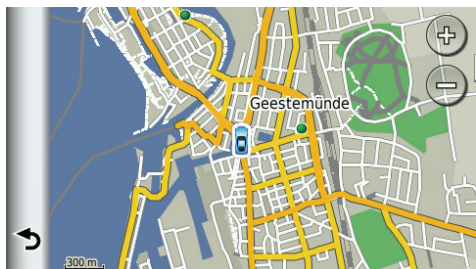
05: France



06: Italia



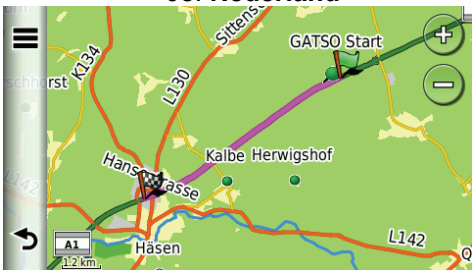
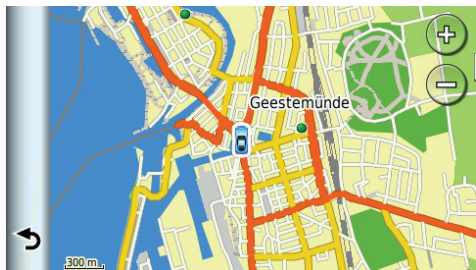
07: Luxembourg



GPS ist Aus

Ankunft	9:53
Ankunft in	500m
Ankunft in	1:07
Tempo	0 km/h

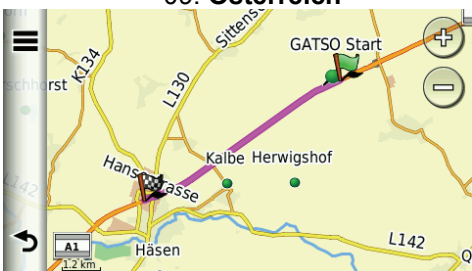
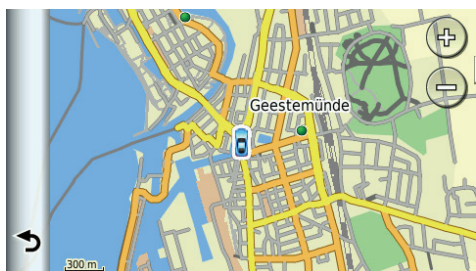
08: Nederland



GPS ist Aus

Ankunft	9:53
Ankunft in	500m
Ankunft in	1:07
Tempo	0 km/h

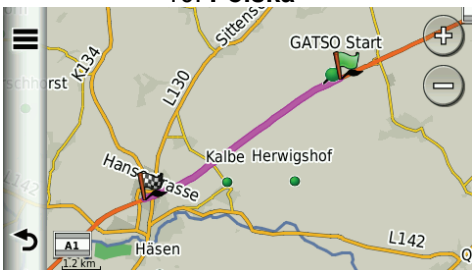
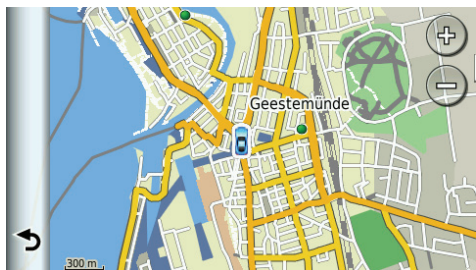
09: Österreich



GPS ist Aus

Ankunft	9:53
Ankunft in	500m
Ankunft in	1:07
Tempo	0 km/h

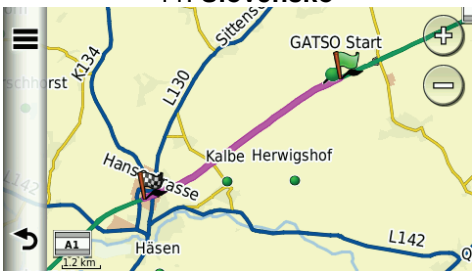
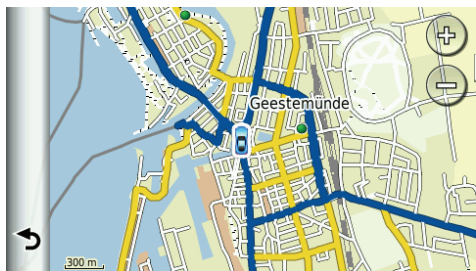
10: Polska



GPS ist Aus

Ankunft	9:54
Ankunft in	500m
Ankunft in	1:07
Tempo	0 km/h

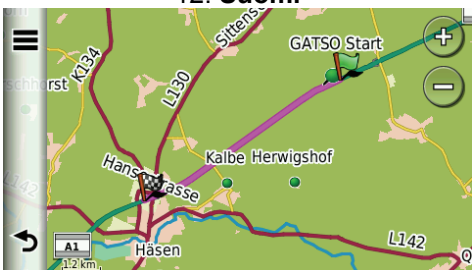
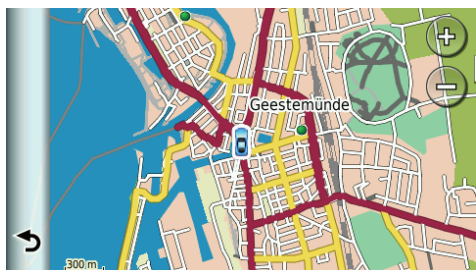
11: Slovensko



GPS ist Aus

Ankunft	9:54
Ankunft in	500m
Ankunft in	1:07
Tempo	0 km/h

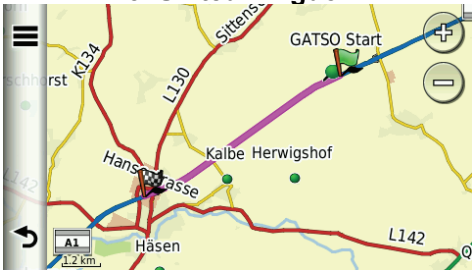
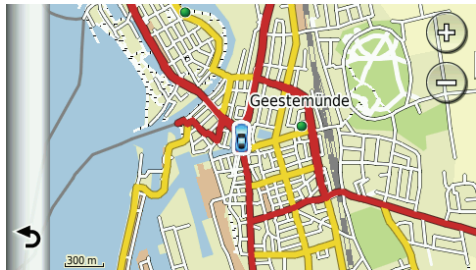
12: Suomi



GPS ist Aus

Ankunft	9:54
Ankunft in	500m
Ankunft in	1:07
Tempo	0 km/h

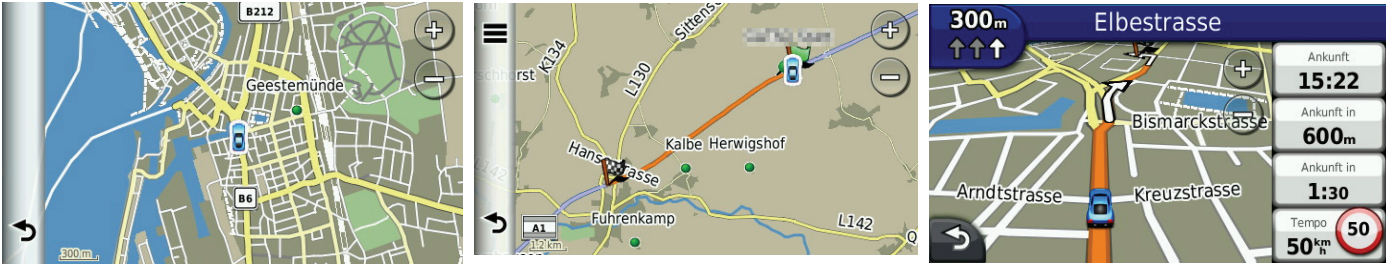
13: United Kingdom



GPS ist Aus

Ankunft	9:55
Ankunft in	500m
Ankunft in	1:07
Tempo	0 km/h

14: NAVIGON



15: Typfile vonHarold

