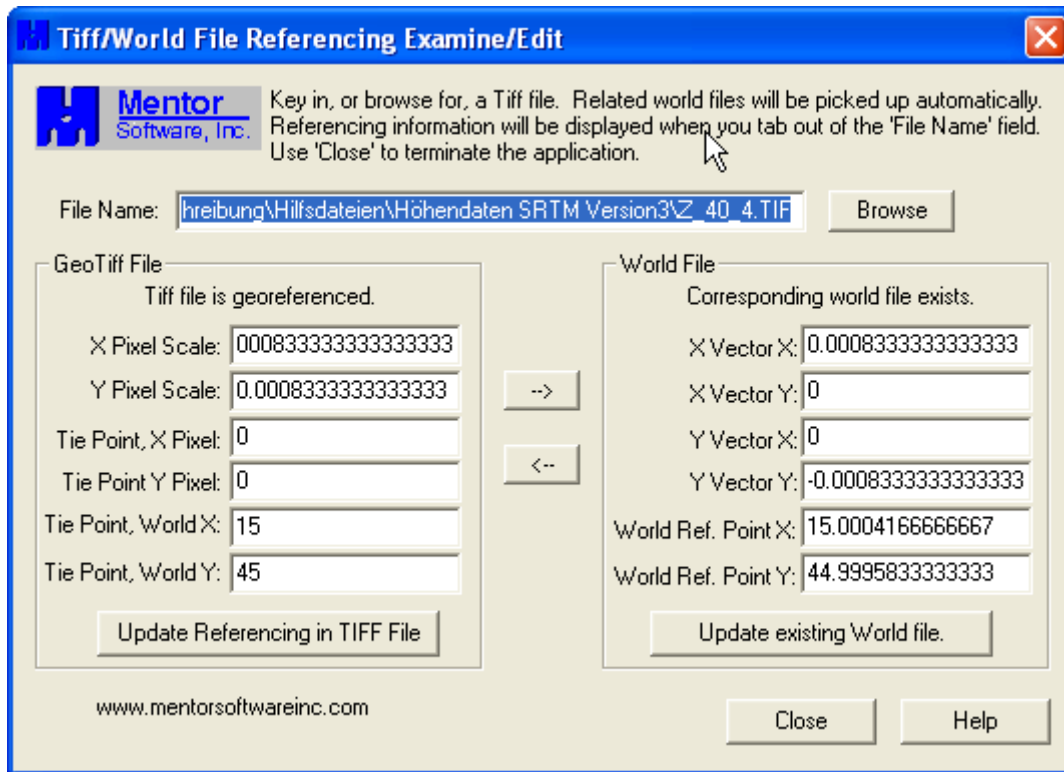


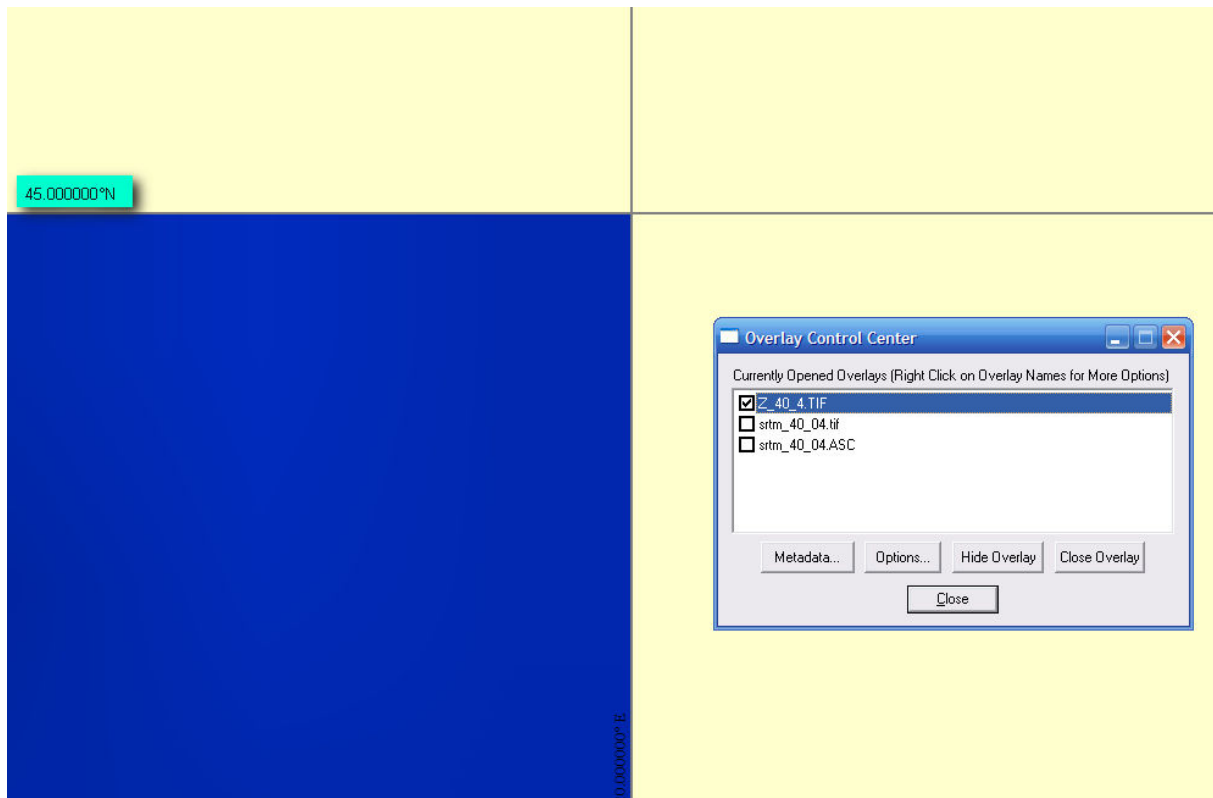
GeoTiff Datei **Version 3** von CGIAR ftp Server heruntergeladen, 17.03.2008

srtm_40_04.zip	26.963 KB	WinZip-Datei	17.03.2008 21:52
Z_40_4.TIF	70.360 KB	TIF-Datei	01.11.2006 21:55

In GeoTiffExamine.exe geöffnet



In Global Mapper geöffnet



Metadata in Global Mapper

FILENAME= D:\GPS\Diverses\Untersuchungen CGIAR Höhendaten\Z_40_4.TIF
DESCRIPTION=Z_40_4.TIF
UPPER LEFT X=15.0004166667
UPPER LEFT Y=44.9995833333
LOWER RIGHT X=19.9995833333
LOWER RIGHT Y=40.0004166667
WEST LONGITUDE=15.000417° E
NORTH LATITUDE=44.999583° N
EAST LONGITUDE=19.999583° E
SOUTH LATITUDE=40.000417° N
COVERED AREA=228334 sq km
NUM COLUMNS=6000
NUM ROWS=6000
NUM_BANDS=1
PIXEL WIDTH=0.000833 arc degrees
PIXEL HEIGHT=0.000833 arc degrees
MIN ELEVATION=-43 meters
MAX ELEVATION=2671 meters
ELEVATION UNITS=meters
PHOTOMETRIC=Greyscale (Min is Black)
BIT_DEPTH=16
ROWS_PER_STRIP=1
COMPRESSION=None
PIXEL_SCALE=(0.0008333333, 0.0008333333, 1)
TIEPOINTS=(0.00, 0.00, 0.00) --> (15.0000000000, 45.0000000000, 0.0000000000)
MODEL_TYPE=Geographic lat-long system
RASTER_TYPE=Pixel is Area
VERT_DATUM=Unknown Datum Code: 0

GeoTiff Header analysiert mit Listgeo

Geotiff_Information:

Version: 1

Key_Revision: 1.0

Tagged_Information:

ModelTiepointTag (2,3):

0 0 0
15 45 0

ModelPixelScaleTag (1,3):

0.0008333333333 0.0008333333333 0

End_Of_Tags.

Keyed_Information:

GTModelTypeGeoKey (Short,1): ModelTypeGeographic

GTRasterTypeGeoKey (Short,1): RasterPixellsArea

GeographicTypeGeoKey (Short,1): GCS_WGS_84

GeogCitationGeoKey (Ascii,7): "WGS 84"

GeogAngularUnitsGeoKey (Short,1): Angular_Degree

End_Of_Keys.

End_Of_Geotiff.

GCS: 4326/WGS 84

Datum: 6326/World Geodetic System 1984

Ellipsoid: 7030/WGS 84 (6378137.00,6356752.31)

Prime Meridian: 8901/Greenwich (0.000000/ 0d 0' 0.00"E)

Corner Coordinates:

Upper Left (15d 0' 0.00"E, 45d 0' 0.00"N)

Lower Left (15d 0' 0.00"E, 40d 0' 0.00"N)

Upper Right (20d 0' 0.00"E, 45d 0' 0.00"N)

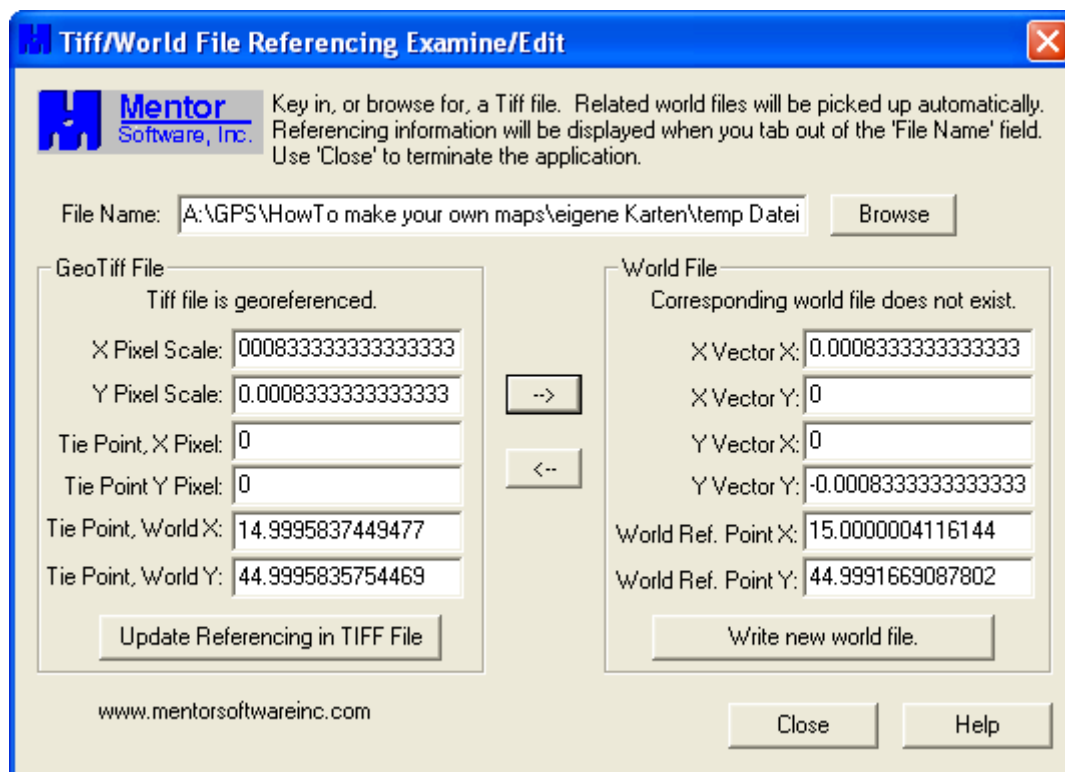
Lower Right (20d 0' 0.00"E, 40d 0' 0.00"N)

Center (17d30' 0.00"E, 42d30' 0.00"N)

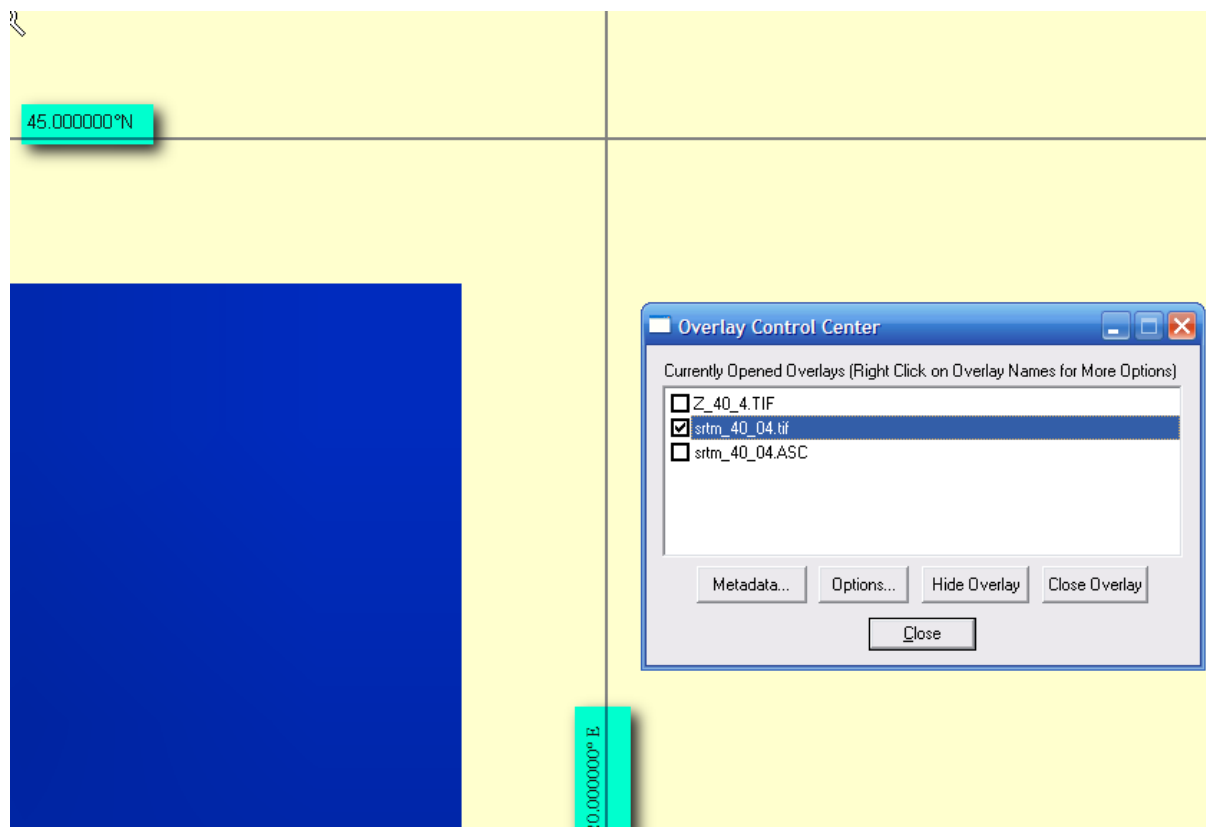
GeoTiff Datei **Version 4.1** von CGIAR ftp Server heruntergeladen, 18.09.2008

srtm_40_04_Version_41.ZIP	25.617 KB	WinZip-Datei	18.09.2008 19:41
srtm_40_04_Version_41.tif	70.407 KB	TIF-Datei	14.09.2008 03:03

In GeoTiffExamine.exe geöffnet



In Global Mapper geöffnet



Metadata in Global Mapper

FILENAME= D:\GPS\Diverses\Untersuchungen CGIAR Höhendaten\srtm_40_04.tif
DESCRIPTION=srtm_40_04.tif
UPPER LEFT X=15.0000004116
UPPER LEFT Y=44.9991669088
LOWER RIGHT X=19.9991670783
LOWER RIGHT Y=40.0000002421
WEST LONGITUDE=15.000000° E
NORTH LATITUDE=44.999167° N
EAST LONGITUDE=19.999167° E
SOUTH LATITUDE=40.000000° N
COVERED AREA=228335 sq km
NUM COLUMNS=6000
NUM ROWS=6000
NUM_BANDS=1
PIXEL WIDTH=0.000833 arc degrees
PIXEL HEIGHT=0.000833 arc degrees
MIN ELEVATION=-57 meters
MAX ELEVATION=2671 meters
ELEVATION UNITS=meters
PHOTOMETRIC=Greyscale (Min is Black)
BIT_DEPTH=16
ROWS_PER_STRIP=1
COMPRESSION=None
PIXEL_SCALE=(0.000833333, 0.000833333, 1)
TIEPOINTS=(0.00, 0.00, 0.00) --> (14.9995837449, 44.9995835754, 0.0000000000)
MODEL_TYPE=Undefined Model (Not a GeoTIFF File)
RASTER_TYPE=Pixel is Area
VERT_DATUM=Unknown Datum Code: 0

GeoTiff Header analysiert mit Listgeo

Geotiff_Information:

Version: 1

Key_Revision: 1.0

Tagged_Information:

ModelTiepointTag (2,3):

0 0 0
14.9995837 44.9995836 0

ModelPixelScaleTag (1,3):

0.000833333333 0.000833333333 0

End_Of_Tags.

Keyed_Information:



End_Of_Keys.

End_Of_Geotiff.

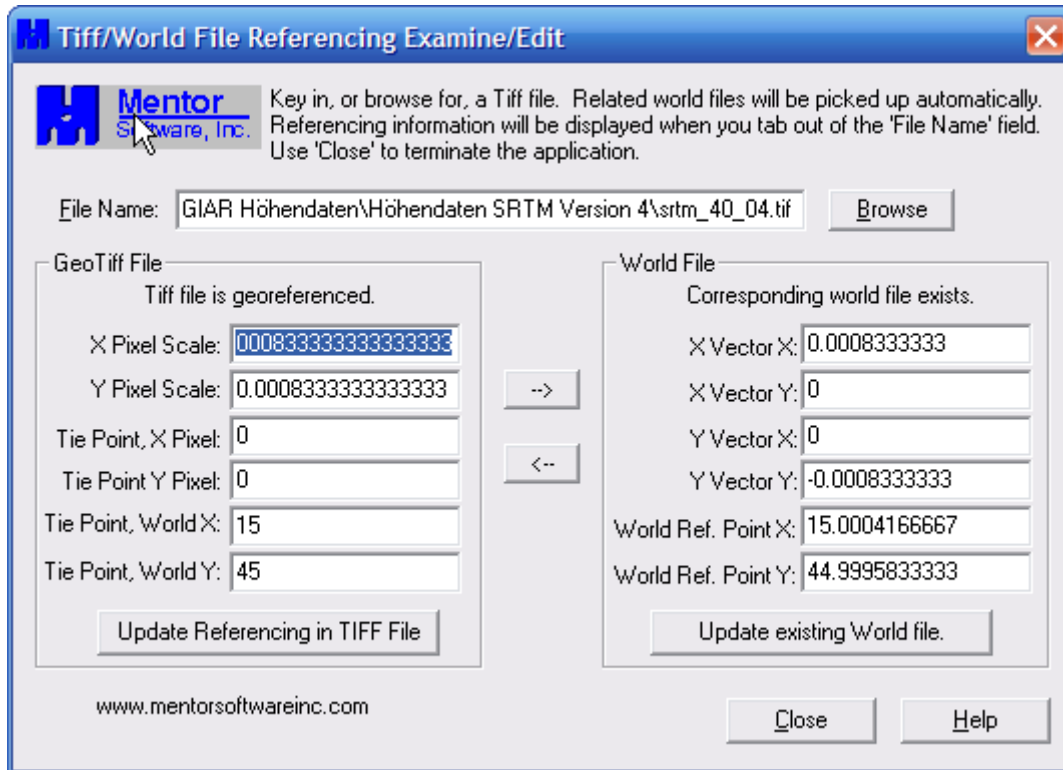
Corner Coordinates:

Upper Left (15.000, 45.000)
Lower Left (15.000, 40.000)
Upper Right (20.000, 45.000)
Lower Right (20.000, 40.000)
Center (17.500, 42.500)

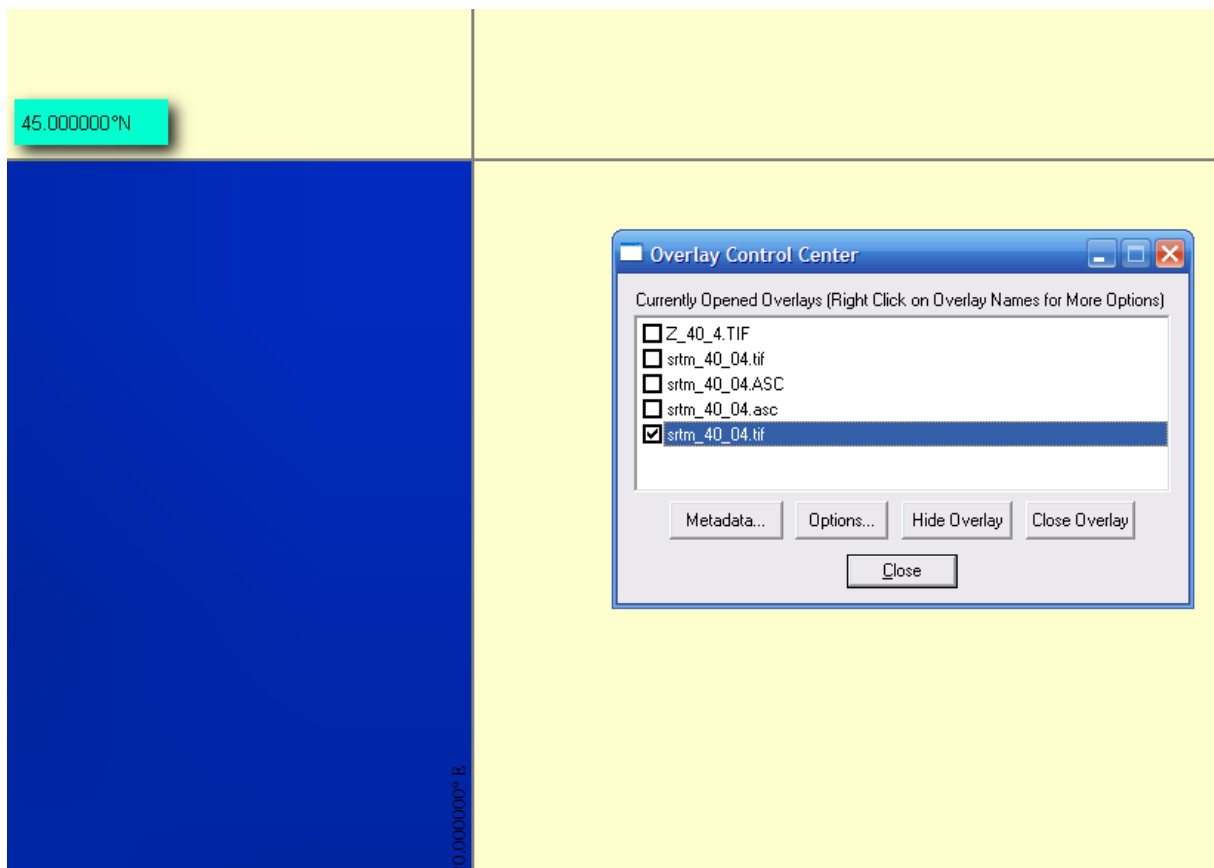
GeoTiff Datei **Version 4.1** von italienischen ftp Server heruntergeladen, 25.11.2008

 srtm_40_04_Version_41.ZIP	25.617 KB	WinZip-Datei	18.09.2008 19:41
 srtm_40_04_Version_41.tif	70.407 KB	TIF-Datei	14.09.2008 03:03

In GeoTiffExamine.exe geöffnet



In Global Mapper geöffnet



Metadata in Global Mapper

FILENAME=D:\GPS\Diverses\Untersuchungen CGIAR Höhendaten\srtm_40_04.tif
DESCRIPTION=srtm_40_04.tif
UPPER LEFT X=15.0004166667
UPPER LEFT Y=44.9995833333
LOWER RIGHT X=19.9995833333
LOWER RIGHT Y=40.0004166667
WEST LONGITUDE=15.000417° E
NORTH LATITUDE=44.999583° N
EAST LONGITUDE=19.999583° E
SOUTH LATITUDE=40.000417° N
COVERED AREA=228334 sq km
NUM COLUMNS=6000
NUM ROWS=6000
NUM_BANDS=1
PIXEL WIDTH=0.000833 arc degrees
PIXEL HEIGHT=0.000833 arc degrees
MIN ELEVATION=-57 meters
MAX ELEVATION=2671 meters
ELEVATION UNITS=meters
PHOTOMETRIC=Greyscale (Min is Black)
BIT_DEPTH=16
ROWS_PER_STRIP=1
COMPRESSION=None
PIXEL_SCALE=(0.0008333333, 0.0008333333, 1)
TIEPOINTS=(0.00, 0.00, 0.00) --> (15.0000000000, 45.0000000000, 0.0000000000)
MODEL_TYPE=Geographic lat-long system
RASTER_TYPE=Pixel is Area
VERT_DATUM=Unknown Datum Code: 0

GeoTiff Header analysiert mit Listgeo

Geotiff_Information:

Version: 1

Key_Revision: 1.0

Tagged_Information:

ModelTiepointTag (2,3):

0 0 0
15 45 0

ModelPixelScaleTag (1,3):

0.0008333333333 0.0008333333333 0

End_Of_Tags.

Keyed_Information:

GTMModelTypeGeoKey (Short,1): ModelTypeGeographic

GTRasterTypeGeoKey (Short,1): RasterPixelIsArea

GeographicTypeGeoKey (Short,1): GCS_WGS_84

GeogCitationGeoKey (Ascii,7): "WGS 84"

GeogAngularUnitsGeoKey (Short,1): Angular_Degree

End_Of_Keys.

End_Of_Geotiff.

GCS: 4326/WGS 84

Datum: 6326/World Geodetic System 1984

Ellipsoid: 7030/WGS 84 (6378137.00,6356752.31)

Prime Meridian: 8901/Greenwich (0.000000/ 0d 0' 0.00"E)

Corner Coordinates:

Upper Left (15d 0' 0.00"E, 45d 0' 0.00"N)


Lower Left (15d 0' 0.00"E, 40d 0' 0.00"N)

Upper Right (20d 0' 0.00"E, 45d 0' 0.00"N)

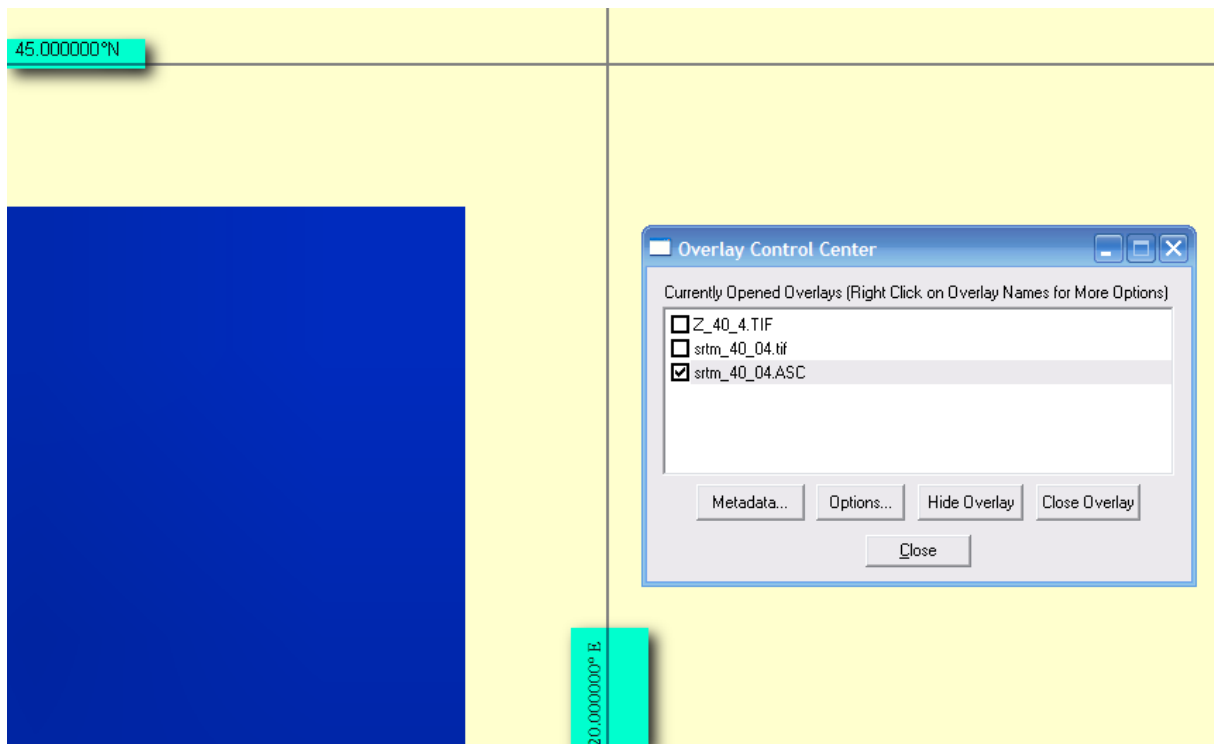
Lower Right (20d 0' 0.00"E, 40d 0' 0.00"N)

Center (17d30' 0.00"E, 42d30' 0.00"N)

ARC ASCII Datei über das CGIAR Webinterface heruntergeladen, 17.11.2008

 srtm_40_04_ARCINFO_ASCII...	29.925 KB	WinZip-Datei	17.11.2008 19:31
 srtm_40_04_ARCINFO_ASCII...	168.754 KB	ASC-Datei	23.05.2008 21:39




In Global Mapper geöffnet



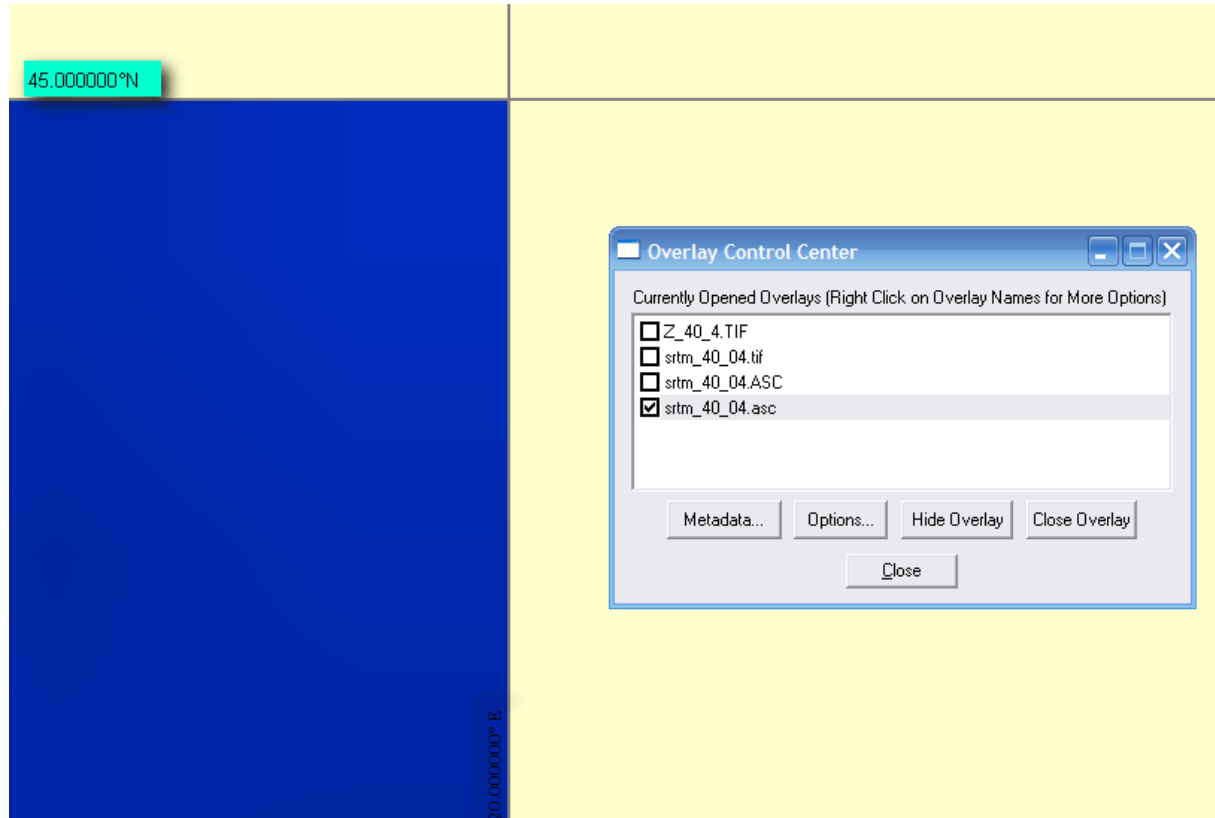
Metadata in Global Mapper

FILENAME= D:\GPS\Diverses\Untersuchungen CGIAR Höhendaten\srtm_40_04.ASC
DESCRIPTION=srtm_40_04.ASC
UPPER LEFT X=15.0000004116
UPPER LEFT Y=44.9991669088
LOWER RIGHT X=19.9991670783
LOWER RIGHT Y=40.0000002421
WEST LONGITUDE=15.000000° E
NORTH LATITUDE=44.999167° N
EAST LONGITUDE=19.999167° E
SOUTH LATITUDE=40.000000° N
COVERED AREA=228335 sq km
NUM COLUMNS=6000
NUM ROWS=6000
PIXEL WIDTH=0.000833 arc degrees
PIXEL HEIGHT=0.000833 arc degrees
MIN ELEVATION=-57 meters
MAX ELEVATION=2671 meters
ELEVATION UNITS=meters

ARC ASCII Datei Direkt vom italienischen FTP Server heruntergeladen, 25.11.2008

 srtm_40_04.zip	26.622 KB	WinZip-Datei	25.11.2008 21:36
 srtm_40_04.prj	1 KB	IDL project file	19.09.2008 22:26
 srtm_40_04.asc	168.760 KB	ASC-Datei	19.09.2008 22:26

In Global Mapper geöffnet



Metadata in Global Mapper

FILENAME=D:\GPS\Diverses\Untersuchungen CGIAR Höhendaten\srtm_40_04.asc
DESCRIPTION=srtm_40_04.asc
UPPER LEFT X=15.0004166667
UPPER LEFT Y=44.9995833333
LOWER RIGHT X=19.9995833333
LOWER RIGHT Y=40.0004166667
WEST LONGITUDE=15.000417° E
NORTH LATITUDE=44.999583° N
EAST LONGITUDE=19.999583° E
SOUTH LATITUDE=40.000417° N
COVERED AREA=228334 sq km
NUM COLUMNS=6000
NUM ROWS=6000
PIXEL WIDTH=0.000833 arc degrees
PIXEL HEIGHT=0.000833 arc degrees
MIN ELEVATION=-57 meters
MAX ELEVATION=2671 meters
ELEVATION UNITS=meters