

Garmin Map Set Names Editor V0.1

Introduction

Once when you create a map set in MapSource you are not able to adapt the map set names.

When you have a Garmin receiver with a large display than there is no problem. Names will be displayed in totally.

But when you have an outdoor GPS with a small display like the GPSmap 60Cx, map set names will be displayed like screen shot alongside.

I have written a small application that let you adapt map set names as stored in GMAPSUPP.IMG files.



Installation

There is no need for installation. You can run the application where it is stored.

This application will not write to registry or store other files in system directory. When the application is closed it will create an .ini file to store the selected Garmin directory. The .ini file is stored in the same folder as where this application is executed.

Instructions for use

Compose your map set with MapSource and upload to GPS or local drive. To be able to upload to local drive you will need my special MapSource version that you can find on internet.

Start up the program GarminMSNtool.exe and browse for the just composed GMAPSUPP.IMG file. Once file is loaded, hit button Scan File to let the application look for the map set names:



Each map set name has an index number from 1 to n (n is number of maps available in file).

As extra information Garmin's map ID is displayed between brackets and at the end you see the map set name as given by MapSource.

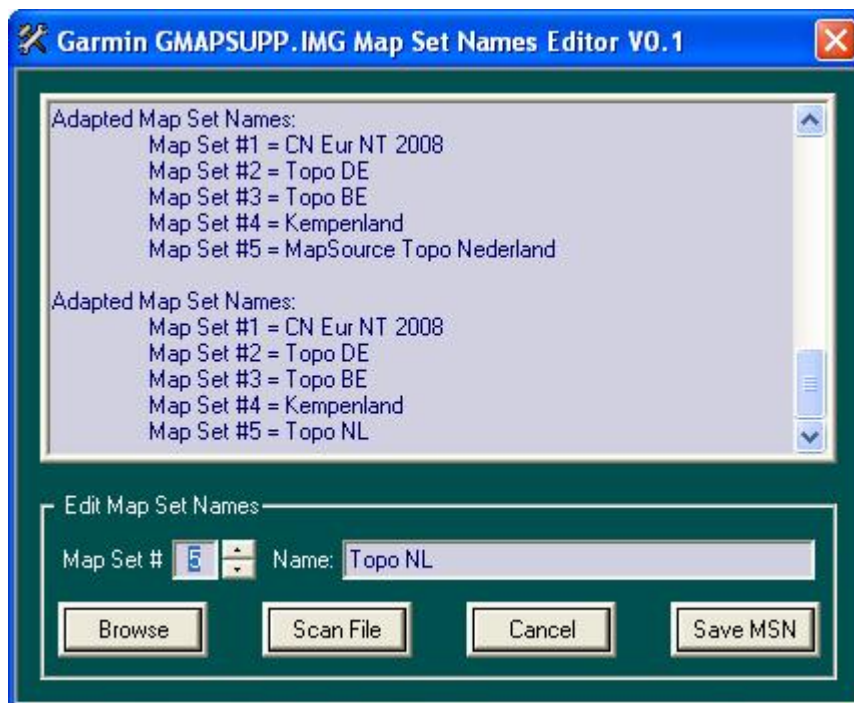
You see that for instance map set name BELGIAN TOPO MAP – NEDERLANDS has too much characters to be clearly displayed in 60Cx GPS.

With the Up Down control select map set # from which you want to adapt the name.

According map set name will be copied to the Name box. Edit the map set name in the edit box and select next map set #.

Every time you finish editing a name, the result window will be updated with the total result. You finished editing by clicking outside the edit box.

All done it could look like:



Click button Save MSN to save all modifications.

When GMAPSUPP.IMG was stored on local drive you need to transfer to your Garmin receiver.

Once uploaded to your receiver the screen shot looks like:

These are much better readable than the original MapSource names.

Enjoy your great Garmin products.

MyRevel
January 2008
The Netherlands

